



# arisa health

*annual report*

*July 2021 - June 2022*





Arisa Health is a CARF-accredited behavioral health center and is Arkansas' largest and most comprehensive nonprofit behavioral healthcare provider and is certified by the Arkansas Department of Human Services. Arisa functions as the safety net provider serving those most in need through evidence-based care.



Our mission is to lead with exceptional care that nurtures health and well-being for all.



## Services

928,457 services were provided to 64,512 clients as of June 30, 2022



## Population

\*Population estimates from the U.S. Census Bureau as of July 2021.

**2,070,831**

residents out of  
2,988,248 (Arkansas' total population) live in the Arisa coverage area

### Arisa Health Service Numbers

- 9,301 Emergency Screenings
- 446 Schools with Arisa School-based Svcs.
- 3 Primary Care Clinics
- 3 Therapeutic Day Treatment Programs
- 25 Rehabilitative Day Programs
- 1 Qualified Residential Treatment (Haven)
- 2 Residential Recovery Programs

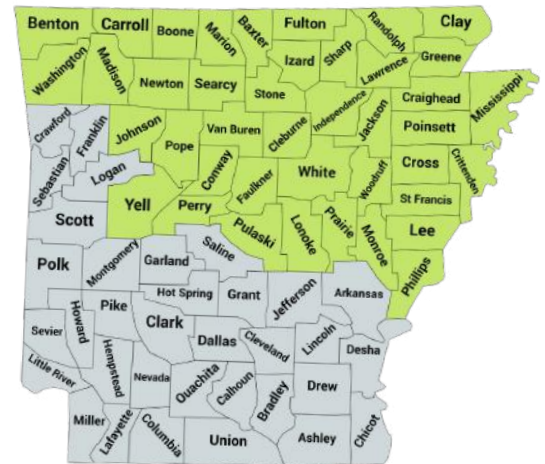
*Numbers as of June 30, 2022*

**41**

counties  
served in  
Arkansas

**75**

locations  
throughout  
Arisa Health

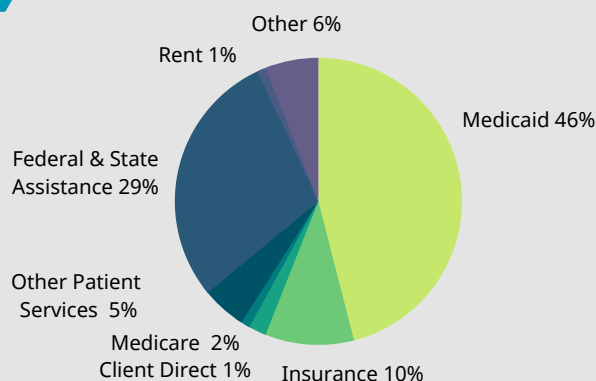


**\$89.5**

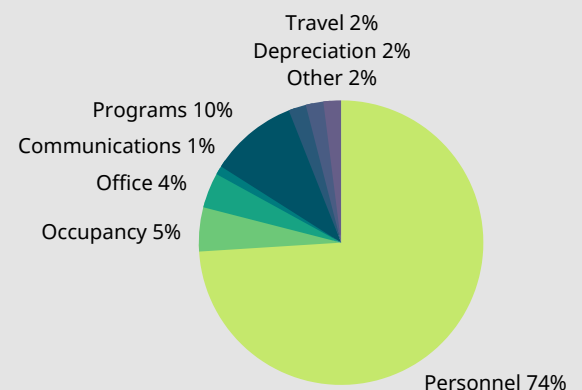
million annual  
operating  
revenue

## FY22 Operating Revenues and Expenses (unaudited)

### Revenue



### Expenses



# Associates

Arisa has 1,050 associates, which include:

- Prescribers:
  - General Psychiatrists
  - Child & Adolescent Psychiatrists
  - Psychiatric Mental Health Nurse Practitioners
- Licensed Mental Health Professionals:
  - Psychologists
  - Licensed Counselors
  - Psychological Examiners
  - Licensed Social Workers
- Nurses:
  - Registered Nurses
  - Licensed Practical Nurses
  - Certified Nursing Assistants
- Certified Addiction Professionals
- Special Education Teachers
- Qualified Behavioral Health Providers
- Interpreters
- Outreach Specialists
- Peer Specialists
- Customer Service Representatives
- Non-Clinical Associates (Administration, Billing, Compliance, Facilities, Finance, Human Resources, Information Technology, etc.)

1,050

Arisa associates

# Rankings

According to a study from 2020 by the Arkansas Department of Health, Arkansas is ranked 48th in the U.S. for overall health.

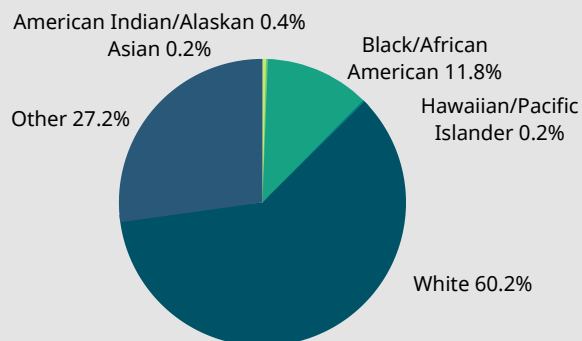
Arisa Health is applying the Whole-Health approach and working to utilize Certified Community Behavioral Health Clinics to provide holistic and coordinated care for Arkansans to lead to better outcomes.

48

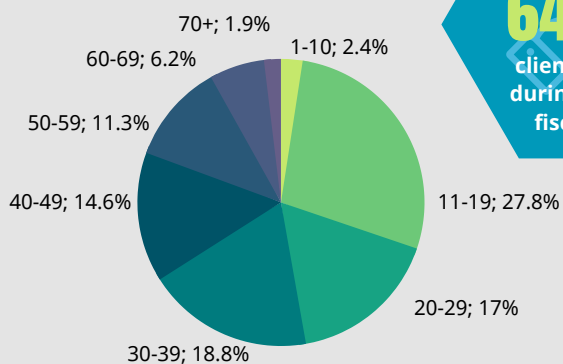
Arkansas is ranked 48th in the U.S. for health

# Clients

## Race



## Age

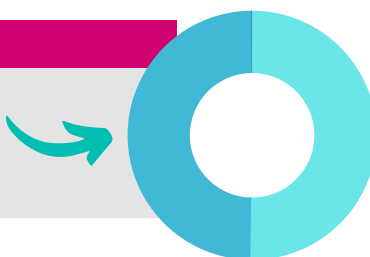


64,512

clients served during the last fiscal year

## Gender

50.24% Female  
49.65% Male  
0.11% Unknown



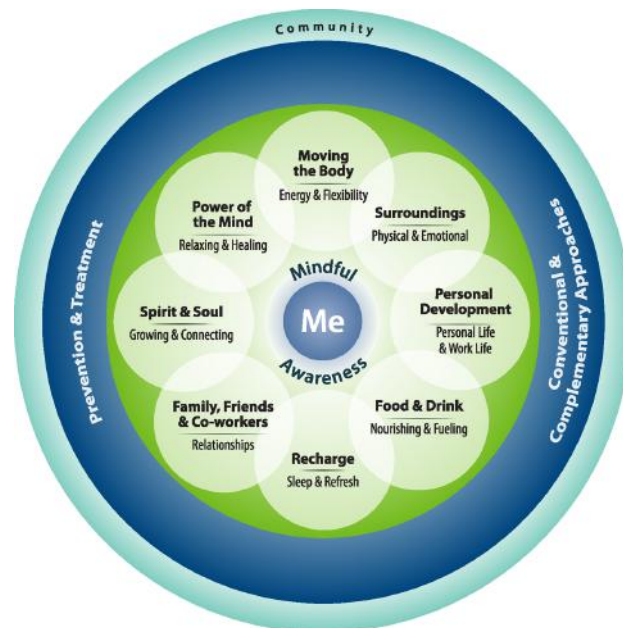
Arisa Health offers care for Arkansans who are insured, underinsured, and those who have no insurance based on a sliding fee schedule.

# Whole Health Efforts Ramping Up at Arisa Health

The Whole Health Institute is a non-profit organization founded in 2019 by philanthropist Alice Walton. Located in Bentonville, the Institute's mission is to transform the way healthcare is delivered by focusing on "what matters to" people rather than on "what is the matter with" people. This approach is rooted in helping us clarify our "Meaning, Aspiration, and Purpose" and then using that as motivation to consistently attend to multiple aspects of our self-care (see the Circle of Health diagram).

This approach has demonstrated powerful results in the VA Healthcare System by improving population health, reducing costs, enhancing patient experience, and improving work life for providers. The Whole Health Institute is collaborating with Arisa as a primary health partner to see if we can replicate those results within our system of care.

In addition to having 225 associates trained so far in the Whole Health approach, Arisa recently received a grant to hire a full-time Whole Health Project Coordinator. This is an investment in associates and persons served.



*"A whole-person approach to mental health care is a groundbreaking place for change. Implementation of a Whole Health Approach to clinical care for clients, and support for Arisa associates is an exciting adventure, as well as a big undertaking that cannot be done alone. Together, I look forward to working towards transforming Arisa Health to be an illustration of living our Whole Health. By nourishing our physical, mental, and spiritual health, we pave a new path to turn illness into wellness, and loss of purpose into a meaning-filled, purpose-driven life. Let's do this!"*

**Anna Koehler**  
Whole Health Project Coordinator

This program will help us take the next steps in integrating this approach into the treatment of our clients and will support the health and wellness of our associates by helping us build our organizational culture around good self-care practices. This process began in May, with all Arisa Health associates receiving Mindful Monday emails each week, with tips on taking good care of ourselves. Thanks to all "Whole Health Champions" who are taking this journey with us at Arisa Health.

254

Primary Care Clients



## Primary Care

Arisa Health Primary Care provides a full range of medical care including chronic disease management and treatment of new, non-life threatening conditions.

We focus on treating the whole person by recognizing the strong link between mind and body. Our goal is to improve the patient experience through an approach to overall physical and mental well-being.

We care for those insured, underinsured and uninsured based on a sliding fee schedule.



### Northeast Region

2707 Browns Lane  
Jonesboro, AR 72401  
870.336.2077  
Mon-Fri 8:00 – 5:00 PM

### Central Region (Mobile)

350 Salem Rd., Suite 1  
Conway, AR 72034  
833.737.1197

### Northwest Region

2400 S. 48th Street  
Springdale, AR 72762  
479.725.5216  
Mon-Fri 8:00 – 5:00 PM

### Central Region (Opening Soon)

110 Skyline Drive  
Russellville, AR 72801  
833.737.1197

## Outpatient Services

Arisa offers a variety of outpatient counseling options such as child, adult, family and marriage therapy.



*Every Child Deserves A Home*

Haven is a residential treatment center in Conway serving girls 13-18 years of age who have been referred by the Arkansas Division of Children & Family Services (DCFS). Haven provides intensive interventions, including individual and family therapy, psychoeducation, medication management, as well as life skills instruction.

## Therapeutic Foster Care

Arisa Health's Therapeutic Foster Care program provides children and youth with structured, consistent treatment in a clinical setting and in the home environment of specially trained therapeutic foster parents.

43,184

counseling clients

12

Haven beds available  
for clients

377

Therapeutic Foster  
Care clients





**446**  
schools

**11,931**  
students in School-  
based services

**286**  
Therapeutic Day  
Treatment clients

## School-based Services

Arisa Health employs school-based providers located in 446 schools across the Arisa footprint, providing services to 11,931 students within the school setting each year. Services are designed to help students in preschool through high school who are facing emotional and/or behavioral challenges that interfere at school and home.

## Therapeutic Day Treatment

Arisa Health collaborates with local school districts to provide both behavioral health care services and classroom education to students with Serious Emotional Disturbance who require intensive services with their education and are able to reside at their homes. The goal is to help the child succeed educationally and socially so they can be integrated back into the public school setting.



## Adult Rehabilitative Day Services

Through the 25 programs, the ultimate goal is for the client to live as successfully and independently as possible in the community setting by maximizing the client's personal, social and vocational competencies. Adults in these programs receive ongoing case management and therapy.

## Crisis Services

Arisa strives to provide care in the least restrictive setting, avoiding costly hospitalizations whenever possible. In the 2022 fiscal year, Arisa associates conducted 7,504 crisis screenings and successfully diverted 3,497 people from hospital admission. These individuals were provided alternative services, such as crisis stabilization, outpatient therapy, medication management, etc.

**750**

Adult Rehabilitative  
Day Services clients

**7,504**

crisis calls received

**3,497**

number of people  
successfully diverted  
from hospital  
admission



## Therapeutic Communities

Therapeutic Community programs are located in Jonesboro, Corning, and Helena. These communities provide supervision and round-the-clock mental health care to adult men and women who typically enter the program as the result of a court order. A client's stay can range from six months to several years.

## Recovery Services

Arisa Health provides an array of treatments for people suffering from substance use disorder, such as outpatient assessment and counseling to residential treatment at Arisa-owned facilities in Searcy and Forrest City (a total of 66 beds). We also provide Medication Assisted Therapy (MAT).



**759**

total number of  
clients from  
Recovery  
Services from  
last fiscal year

**131**

total number of  
clients from  
Therapeutic  
Communities from  
last fiscal year

**66**

beds available in  
Recovery Services

**84**

housing  
opportunities  
available

## DASEP

Arisa Health contracts with the Arkansas Department of Human Services, Division of Aging, Adult, & Behavioral Health Services, to provide Drug & Alcohol Safety Educational Program (DASEP) services in the counties of Baxter, Benton, Boone, Carroll, Madison, Marion, Newton, Washington, Cleburne, Conway, Faulkner, Johnson, Perry, Pope, Searcy, Stone, Van Buren, Yell, Fulton, Izard, Sharp, Randolph, Lawrence, Greene, Clay, Craighead, Crittenden, Jackson, Independence, White, Woodruff, Monroe, Poinsett, Mississippi, Lee, St. Francis, Phillips, and Cross. DASEP associates teach the mandated DASEP class and/or classes required for reinstatement of driving privileges. This team also makes recommendations to the courts.

## Residential Services

These subsidized independent living and group homes help individuals with serious mental illnesses who might otherwise find themselves homeless. Rent is based on the resident's monthly income. Additional services such as day treatment, case management, medication management, and therapy are also offered to clients. McCormack Apartments in Conway, Hartford Square Apartments in Russellville, Watson Street in Fayetteville, Oak Tree in Rogers, and Hemingway in Springdale all offer apartments. Additionally, Arisa Health provides transitional housing in Searcy.





*The best views are always at the end of the roughest roads. Let Arisa Health change your view on life.*

## Certified Community Behavioral Health Clinic (CCBHC) Grants

Arisa Health has been awarded 3 CCBHC grants. These 2-year grants fund designated clinics that provide a comprehensive range of mental health and substance use services. CCBHC's:

- Embrace a recovery-oriented philosophy, supporting multiple pathways for individuals to recover from mental illness and substance use disorders.
- Are designed to provide Whole-Person Care, which considers all aspects of a person's health, including their physical, mental, and behavioral health, as well as their socioeconomic status, housing situation, and other social determinants of health, which can exacerbate health issues.
- Provide trauma-informed care.
- Serve clients regardless of reimbursement source.
- Allow clients to receive these additional services while keeping their current psychiatrist, therapist, and Qualified Behavioral Health Provider.

## Mental Health First Aid

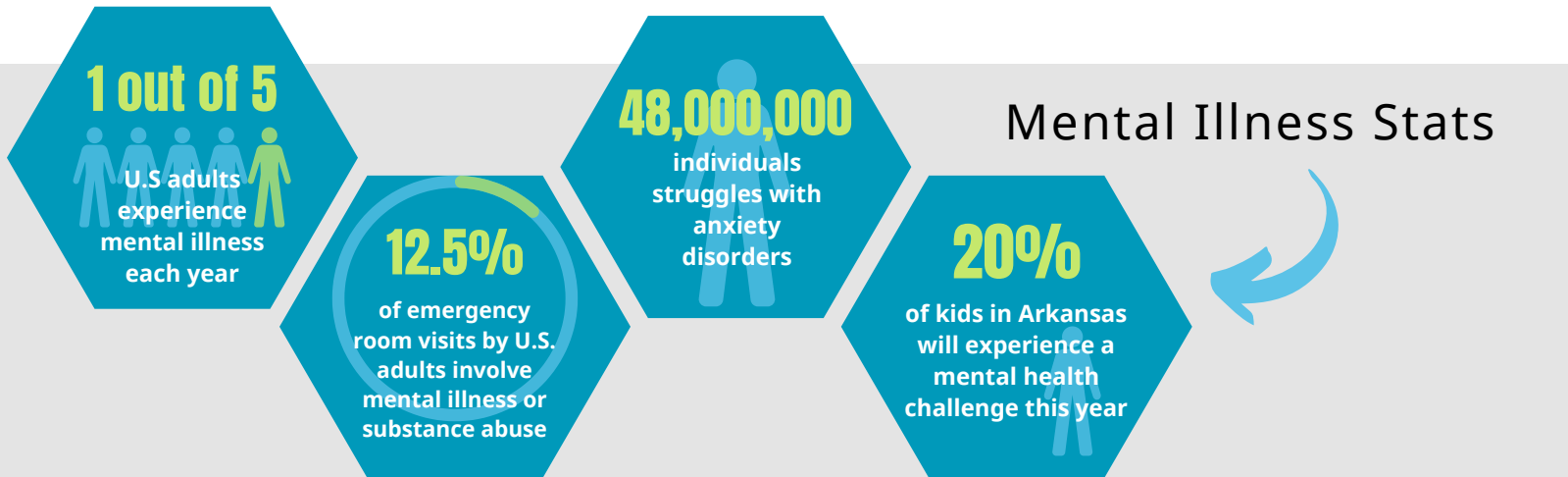
Arisa offers Youth, Adult, Veteran and Law Enforcement specific Mental Health First Aid training which teaches how to identify and help each of those who are experiencing mental illness or substance use disorders.

These comprehensive trainings teach the best practices for responding.

Arisa Health supports many community partners, including law enforcement, universities and church groups, to name a few.

This curriculum specifically covers:

- Signs and symptoms of substance use
- Signs and symptoms of mental illness
- Responding to youth in crisis
- Connecting with helpful resources







## Arisa Diversity, Equity & Inclusion (DEI) Project

Arisa's vision is transforming communities one life at a time by leading with exceptional care that nurtures health and well-being for all. We know we cannot do this without a steadfast commitment to diversity, equity and inclusion.

Over the last two years, Arisa's commitment to diversity, equity and inclusion is demonstrated by the organization's support and involvement of associates in key initiatives, such as:



- Identifying interventions surrounding unconscious bias to help Arisa move beyond mere compliance and toward a work culture that is more aware and inclusive.
- Addressing systematic racism and promoting a more equitable and inclusive service region.
- Recognizing the significance and potential impact of such a commitment taking steps to enact it throughout our entire 41-county service region.
- Participating as part of the 2021 TRUE Northwest TRAIN Cohort - an intensive program designed to build leaders for diversity, equity, and inclusion through peer learning opportunities and coaching sessions.
- Recognizing the importance of creating momentum, compiling our collective knowledge and materializing our efforts into a workable plan. Grant funding from the Walmart and Walton Family Foundations allowed Arisa to partner with Diversity Window to develop a comprehensive DEI Plan and Initiative.



## The Integral Pieces of Arisa Health



Arisa Health is comprised of 1,050 associates who do incredible work every day to transform our local communities one life at a time. From our direct service providers to those who are in crucial support roles, we are grateful for our dedicated team.

Arisa Health would not be what it is today without the commitment and passion of our associates and the board members from each county we serve. Thank you for your efforts in this mission.



## 2021 Arisa Health Leadership Academy Graduates

We are dedicated to training tomorrow's leaders today. In November 2021, our very first class of Arisa Leadership Academy graduated.

The purpose of the Arisa Leadership Academy is to bring together the expertise of every region of Arisa to provide a comprehensive one-year training program for leaders and future leaders of Arisa Health.

This curriculum provides 12 sessions which cover topics such as strengths, hiring, crucial

conversations, dysfunctions of a team, compliance, mentoring and learning from others and financials. These topics help each participant gain insight on managing teams and programs within Arisa Health.

After Arisa's first successful Leadership Academy, applications opened in December for another great year of training Arisa Health's future leaders. This year has been another great year and is coming to an end again in November.



Congratulations to our Arisa Leadership participants from the inaugural class in 2021! Participants are listed below.

Libby Bier  
Taelor Blankenship  
Kimberley Boyett  
Linda Cromer  
Sarah Elkins  
Pam Harness

Leslie Hickman  
Vernita Howard  
Bonita Jackson-Amos  
Kristy Kennedy  
Madison Livingston  
Leigh Maxwell

John Dan McCuin  
Destiny McGee  
Angela McLain  
Catherine Nelson  
Thomas Norton  
Casandra Patterson

Mike Patterson  
Tessa Riffell  
Christie Ring  
Donita Ross  
Haden Shepherd  
Wayne Smith

Jeremy Stark  
Jaime Starling  
Gary Taber  
Leslie Tullos  
Erin Willcutt  
Haley Yarbrough





## Leadership

**Laura H. Tyler, PhD, LPC**

*Chief Executive Officer*

**John C. Ryan, EdD, LPC**

*Chief Operations Officer*

**Bill Scheerer, CPA**

*Chief Financial Officer (retiring)*

**Keith Faught, MPA, CPA**

*Chief Financial Officer (incoming 9/1/22)*

**Ruth Allison Dover, JD**

*Chief Legal Officer*

**Brian Davis, MSW, LCSW**

*Chief Clinical Officer*

**Chris DeBernard, MD**

*Chief Medical Officer*

**Tim Hudson, BA**

*Chief Philanthropy & Marketing Officer*

*"The Arisa Health, Inc. Board and leadership team are excited to share this snapshot of the fiscal year which ended 6/30/22. Obviously, a document like this contains a lot of data and descriptions. More importantly, it also reflects the hard work and commitment of our dedicated associates as well as the hopes and dreams of the people we serve.*

*The numbers are just one indication of the amazing and often difficult work that goes into community mental health. The growth in numbers of people served and clinical services provided is proof that we are stronger together, when we join with colleagues throughout Arisa's 41 counties to be the safety net for many in our communities who are otherwise overlooked.*

*The people who choose to work at Arisa make us who we are - the behavioral health center that is truly, 'For Health. For Hope. For You.'"*



**Laura H. Tyler, PhD, LPC**  
Chief Executive Officer



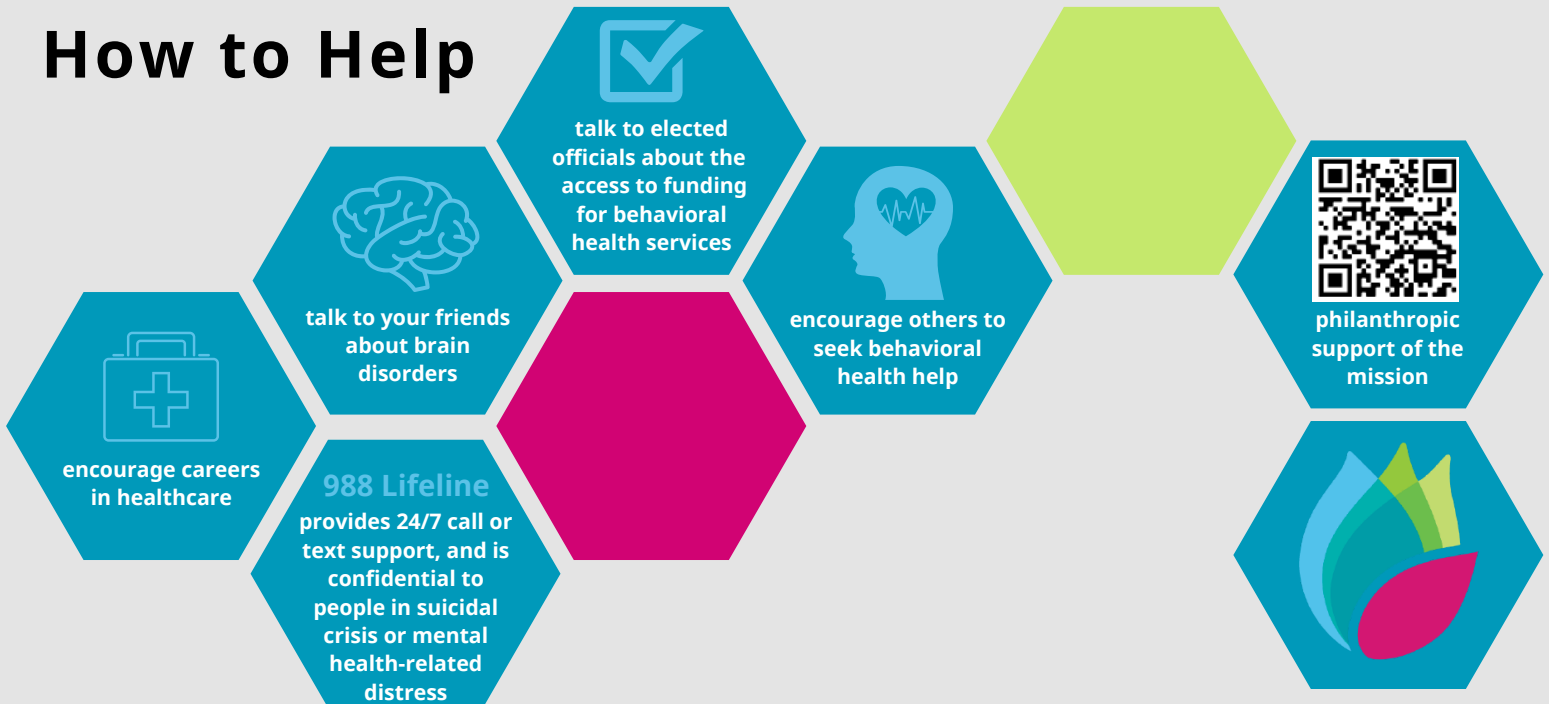
# Board Members

Jackie Brashears | Madison County  
Regina Burkett | Woodruff County  
Paige Catt | Clay County  
Charles T. Cross | Carroll County  
Donnie Davis | Washington County  
Farris DeBoard | Benton County  
Paul Dielmann | Perry County  
Abbey Eddy | Pope County  
Hayward Finks | Pulaski County  
Julia Frost | Johnson County  
Connie Gardner | Washington County  
Lucilla S. Garrett | Carroll County  
Becky Hall, Ed.D. | Phillips County  
Marcia Harding | Pulaski County  
Becky Hartsfield | White County  
Kevin L. Hatfield | Madison County  
Gary R. Head | Washington County  
Mark Herbst | Pulaski County  
Jeanie B. Hill | Washington County

Alice Hines, Ph.D. | Conway County  
Rhonda Hodges | Mississippi County  
Vixen James | Boone County  
Frank Johnson | Washington County  
Marsha Jones | Washington County  
Rebecca Jones | Benton County  
Rose Jones | Lonoke County  
Elizabeth Kelley | Carroll County  
David V. McBee | Marion County  
Kevin Molder | Poinsett County  
Mike Morgenthaler | At-Large  
Mike Newman | Conway County  
Clyde E. Noel | Lee County  
Dewayne Phelan | Poinsett County  
Ruth Provost | Jackson County  
Harold L. Pyle | Yell County  
Maribel C. Rogers | Pulaski County  
Lori P. Ross | Faulkner County

Lynn G. Russell | Washington County  
Jerrod Sandefur | Independence County  
Jerri Skaggs | Benton County  
Eric Smith | Izard County  
Sharon J. Spurlin | Carroll County  
Marvin Steele, Chair | Crittenden County  
Chris Thornton | Washington County  
Jeannie Tindall | Faulkner County  
Henry Torres | Craighead County  
Teresa Vaughan | Cleburne County  
Herb Washington | Pulaski County  
David West | Cross County  
Cedric Williams | St. Francis County  
Jessica Withrow | Baxter County  
Leigh Ann Wright | Greene County  
Kenny J. Wyatt | Stone County  
Robert Young | Greene County  
Jan F. Ziegler | Randolph County

## How to Help



1-800-592-9503

[arisahealth.org](http://arisahealth.org)